

Tobii Dynavox Setup Windows Control for Web Pages and Software

Controlling the Mouse with Mouse Emulation

Using Windows control and Mouse Emulation with your Tobii Dynavox PCEye Go or I-Series gives you access to an enormous amount of content from webpages to educational software to games. All of these activities can be used for education and entertainment and they will all contribute to improving the overall ability and experience of the gaze interaction user. The simple rule to remember is 'if it works with a mouse, it works with Tobii Dynavox gaze interaction'. There are some simple settings that are required to get you up and running. Here we run through them and give you some tips and tricks.



Windows Control

Double Click the shortcut on the desktop to start Windows Control

Table .1 Mouse Emulation Functions

Magnify			Pause
Left Click			Right Click
Cursor Only			No Cursor
Single Click			Double Click
Click and Drag			

Support for Your Tobii Dynavox Device

Get Help Online


See the product-specific Support page for your Tobii Dynavox device. It contains up-to-date information about issues and tips & tricks related to the product. Find our Support pages online at: www.TobiiDynavox.com or www.myTobiiDynavox.com.

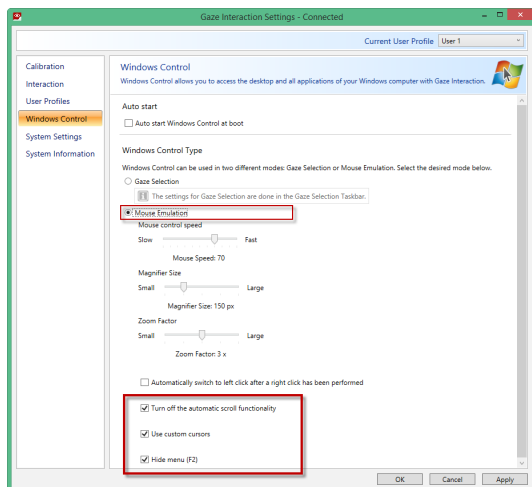
Contact Your Sales Representative or Reseller

For questions or problems with your product, contact your Tobii Dynavox sales representative or authorized reseller for assistance. They are most familiar with your personal setup and can best help you with tips and product training. For contact details, visit www.TobiiDynavox.com/contact

Setup


First we need to make sure that the settings are correct to use the right version of Windows Control.

1. Open Gaze Interaction Settings .
2. Select the Windows Control Tab on the left.




3. Make sure that **Mouse Emulation** is selected.
4. Make sure that **Turn off the automatic scroll functionality** is selected.
5. Make sure that **Use custom cursors** is selected.
Custom cursors are often less distracting and give you good information about the function that the mouse is performing, for example;



 Dock the Mouse Emulation Menu by dragging and dropping it at the edge of the screen.



6. Make sure that **Hide menu (F2)** is selected.
Remember, once you have chosen the correct mouse function for the activity you are using, you can hide the pop up mouse menu by pressing **F2** on the keyboard.

 By pressing the **F2** button on the keyboard you will toggle the Mouse menu to be visible or hidden on the screen.

7. Make sure to select the **Apply** button when you've finished making changes.

Support for Your Tobii Dynamox Device

Get Help Online

See the product-specific Support page for your Tobii Dynamox device. It contains up-to-date information about issues and tips & tricks related to the product. Find our Support pages online at: www.TobiiDynamox.com or www.myTobiiDynamox.com.

Contact Your Sales Representative or Reseller

For questions or problems with your product, contact your Tobii Dynamox sales representative or authorized reseller for assistance. They are most familiar with your personal setup and can best help you with tips and product training. For contact details, visit www.TobiiDynamox.com/contact



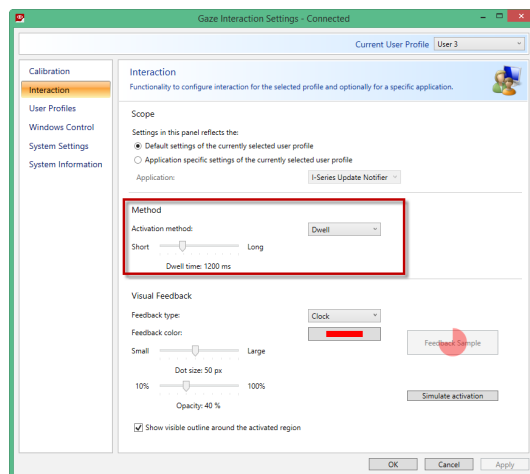
Early Learning Curve software, such as Sensory EyeFX and Look to Learn, often only require cursor movement.



Many web based games and activities require a left click. One way to make this easier for users is to shorten the dwell time down.

To change the dwell time, follow these steps:

1. Select the **Gaze Interaction Settings** 
2. Select the **Interaction** tab.



3. Change the dwell time in the **Method** section



There's no 'correct' dwell time for any individual and you'll often find that certain activities require different times, fast pasted games, for example, need a shorter dwell time than more cognitive activities. Remember, the smaller the dwell time number, the faster the click. Fast clicks are also useful for those people transitioning from the cause and effect part of the curve. You can simulate the activation to see what it will look like and test the speed.



Activities which require click and drag can be challenging for early users of gaze interaction. One way to help is to plug a standard USB mouse in and press and hold the left button while the user controls the cursor movement. We call this 'Assisted Drag'

Tip!

When you're up and running you can make life easier by making the icon for the **Gaze Interaction Settings** always visible in the Windows taskbar.

1. Click the "arrow" in the bottom right of the screen



Support for Your Tobii Dynamox Device

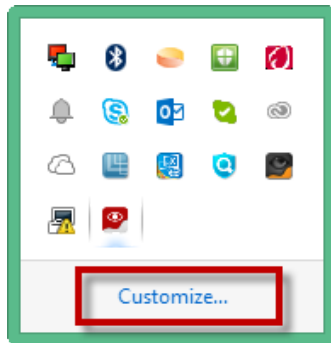
Get Help Online

See the product-specific Support page for your Tobii Dynamox device. It contains up-to-date information about issues and tips & tricks related to the product. Find our Support pages online at: www.TobiiDynamox.com or www.myTobiiDynamox.com.

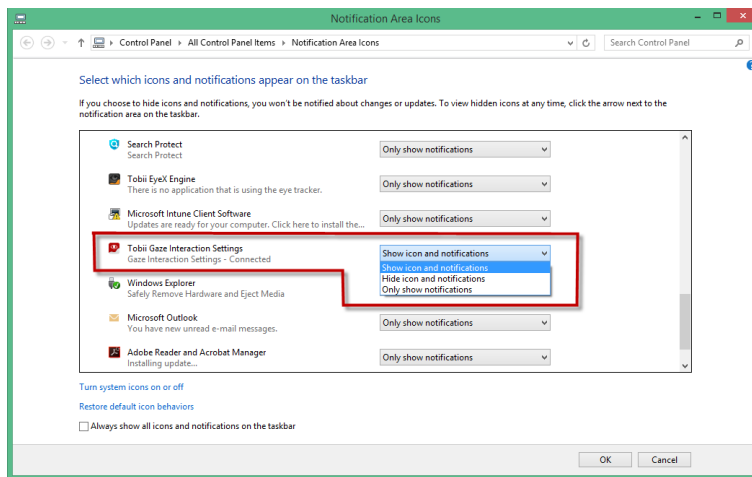
Contact Your Sales Representative or Reseller

For questions or problems with your product, contact your Tobii Dynamox sales representative or authorized reseller for assistance. They are most familiar with your personal setup and can best help you with tips and product training. For contact details, visit www.TobiiDynamox.com/contact

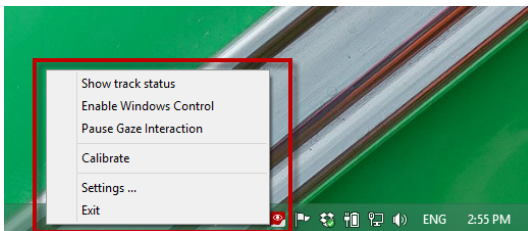
2. Click **Customize**.



3. Find **Gaze Interaction Settings** in the list and change the behavior to **Show Icon and Notifications**.



You can now right click on the icon and get short cuts to the track status window, enabling and disabling Windows Control, pausing Gaze Interaction and more.



Support for Your Tobii Dynamox Device

Get Help Online

See the product-specific Support page for your Tobii Dynamox device. It contains up-to-date information about issues and tips & tricks related to the product. Find our Support pages online at: www.TobiiDynamox.com or www.myTobiiDynamox.com.




Contact Your Sales Representative or Reseller

For questions or problems with your product, contact your Tobii Dynamox sales representative or authorized reseller for assistance. They are most familiar with your personal setup and can best help you with tips and product training. For contact details, visit www.TobiiDynamox.com/contact




When to use which Setting






Sensory EyeFX

Mouse Function	Cursor	Dwell Time
 		N/A



Mouse Function	Cursor	Dwell Time
 		N/A




Boardmaker

Mouse Function	Cursor	Dwell Time
 		N/A



You need to change the selection method in a Boardmaker activity to be Mouse - then choose dwell in the settings

HelpKidzLearn

Mouse Function	Cursor	Dwell Time
 		Play around with the dwell times to suit the activity



Some activities require Click and Drag, see notes above on 'Assisted Drag'

More Activities

See <http://www.tobii-dynavox.com/explore/games-activities/> for more ideas.

Support for Your Tobii Dynavox Device

Get Help Online

See the product-specific Support page for your Tobii Dynavox device. It contains up-to-date information about issues and tips & tricks related to the product. Find our Support pages online at: www.TobiiDynavox.com or www.myTobiiDynavox.com.

Contact Your Sales Representative or Reseller

For questions or problems with your product, contact your Tobii Dynavox sales representative or authorized reseller for assistance. They are most familiar with your personal setup and can best help you with tips and product training. For contact details, visit www.TobiiDynavox.com/contact