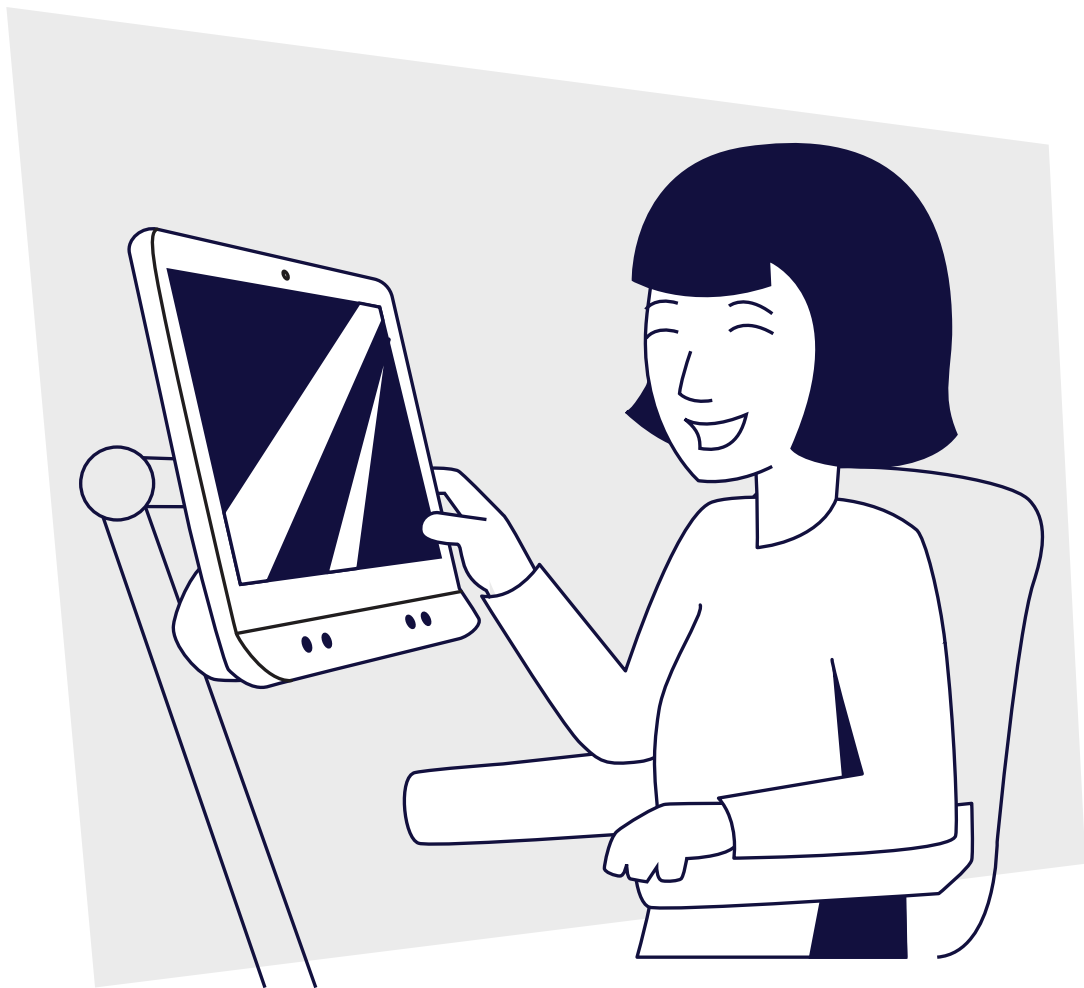


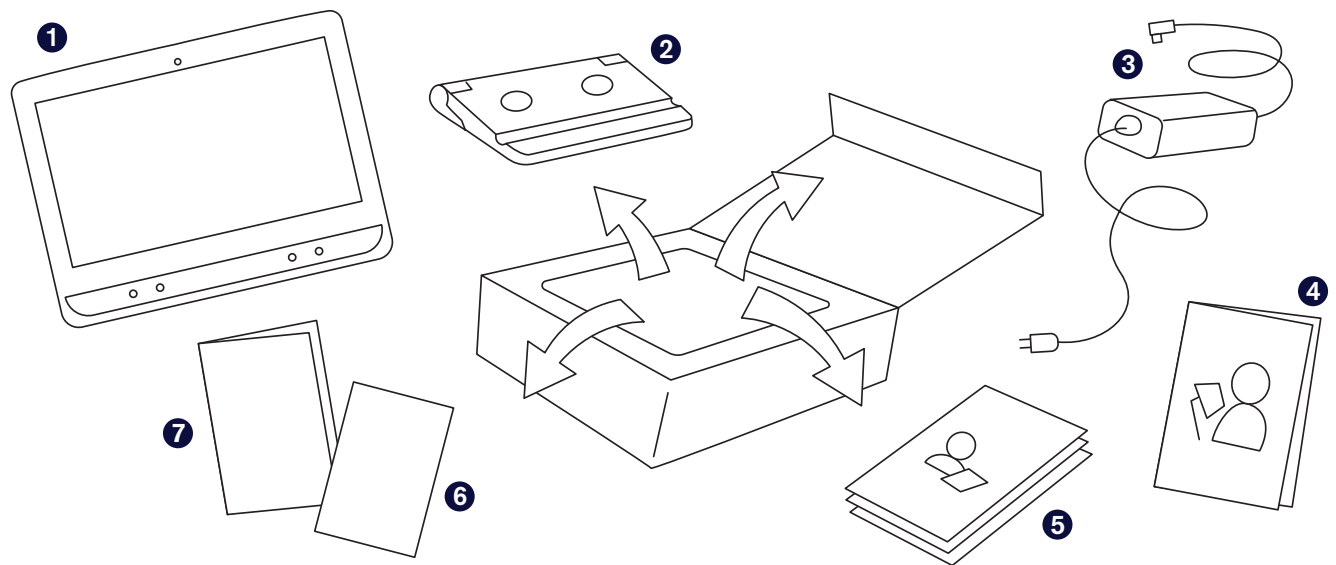


TD I-13 and TD I-16

Getting Started Guide



What's in the Box



1 TD I-Series Device

2 Adjustable Base

3 Power Cable

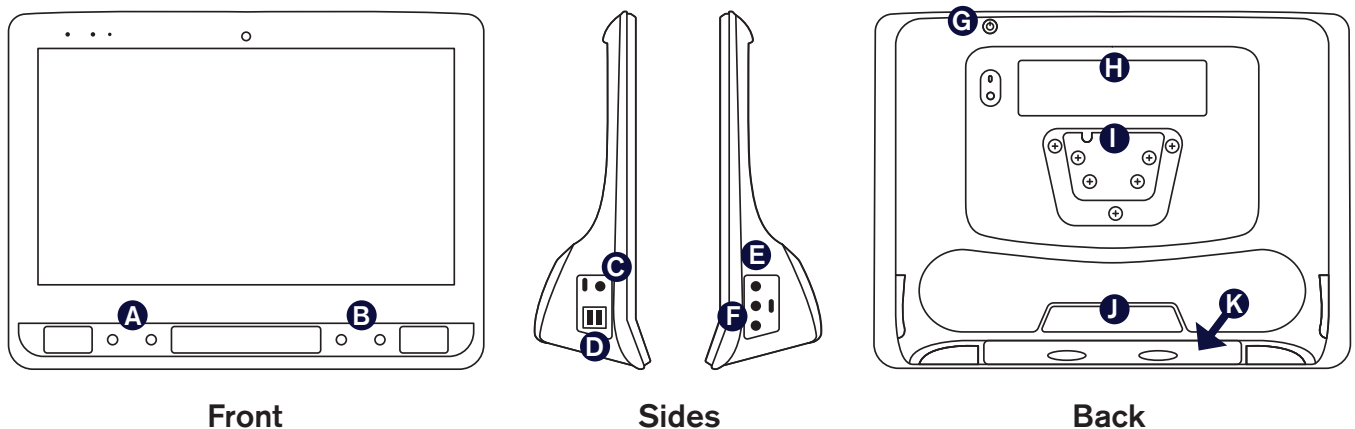
4 Getting Started Guide

5 Training Cards

6 Safety & Compliance Booklet

7 Document Folder

Getting to Know Your Device



Front

Sides

Back

A Adaptive Buttons

B Volume Buttons

C Power Connector

D USB 3.0 Connectors

E Head Phone Jack

F Switch Ports 1 and 2

G Power Button

H Partner Window

I Mounting Plate*

J IR Receiver/Transmitter

K Battery Access**

*If using a Daessy Mount, you will need a Conversion Plate.

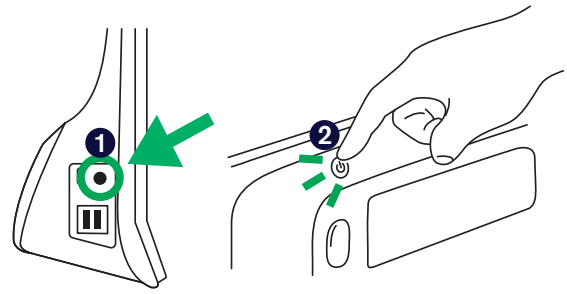
**Battery is located at the bottom of the device.

Follow the steps in this guide to set up and start using your device.

Step 1: Initial Setup

Plug in and Start the Device

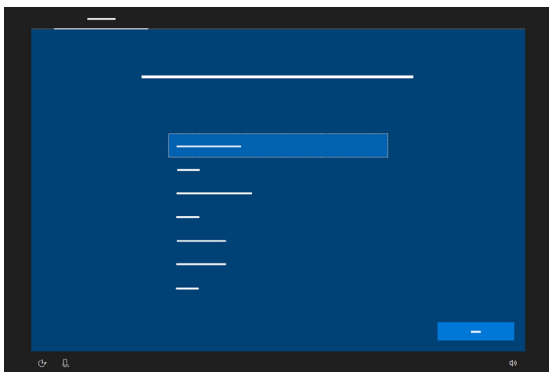
- 1 Connect the power cable to the device and plug in to an outlet.
- 2 Press the Power button.



Setup

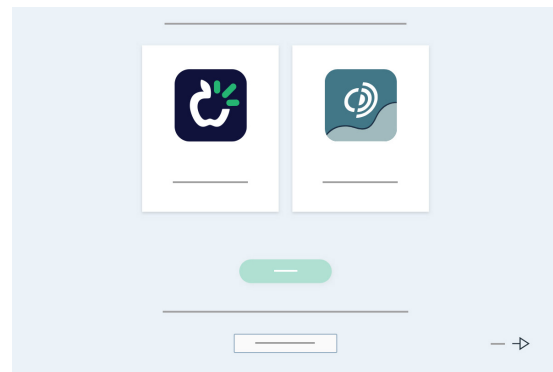
When you turn on your device, you will see one of two screens. If your device has not been pre-configured, you will be prompted to complete the Windows Setup process first.

Windows Setup



While this process does not require a Microsoft account, we recommend that you connect to or create a user's account and not a caregiver's account.

Start Up Wizard: Pick Your App



Choose which app to automatically launch when the device powers on.

Step 2: Configure Communication Software

Follow the prompts in your chosen software to create a new user or restore an existing user file.



TD Snap

Symbol-Supported Communicators



Communicator 5

Text-Supported Communicators




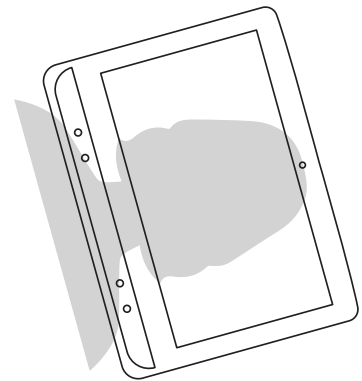
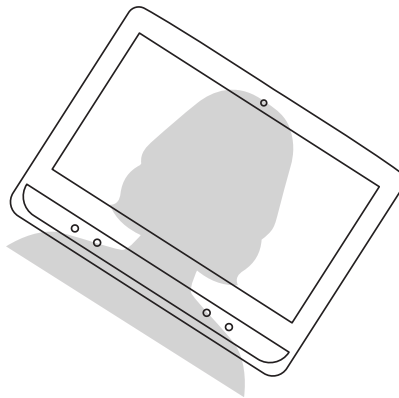
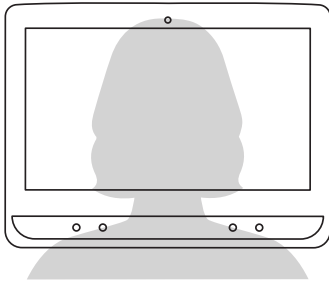
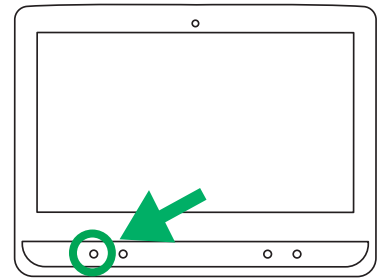
Note

Do not perform calibration for Eye Gaze (Gaze Interaction) until the device has been mounted and the individual is positioned comfortably. See Step 3 for mounting and positioning tips.

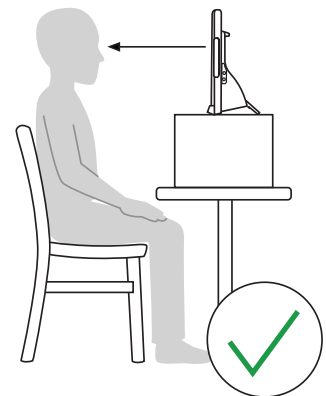
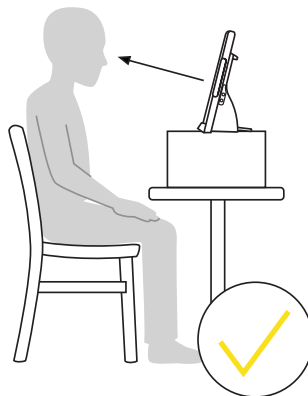
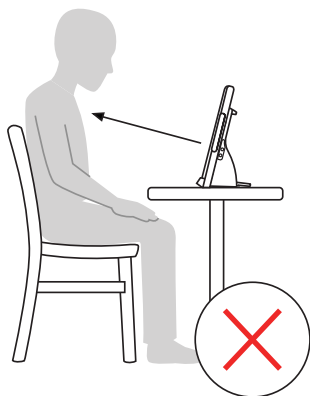
Step 3: Mount and Position

Prepare the user to start using eye tracking by positioning them comfortably. If they use glasses, make sure that they are wearing them and that the lenses are clean.

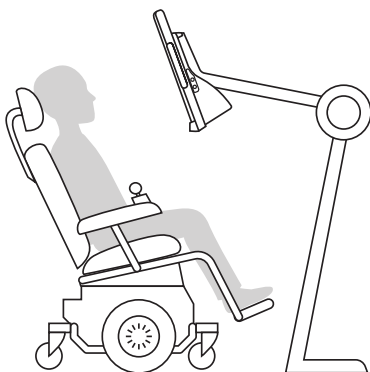
To launch Track Status, touch the Adaptive button  on the front of the device. Track Status helps you find the optimal distance and position for the device.



Place the I-Series device on your mounting system or on the adjustable base on a stable surface in front of the user at, or slightly below, their eye level. If their head is tilted left or right, tilt the I-Series device to match. It is important that the angle of the screen surface match the angle of the user's face. Most users, when seated at a table or desk, will need to have the I-Series device positioned higher than the table surface.



You may need to refine the position of the device during the Calibrate steps on the next page. Always adjust the position of the device to suit the user, not the other way around.



Note

A mounting system is the best option for precise device positioning that is easy to adjust throughout the day. Several mounting options are available, including floor mounts, desk mounts, and wheelchair mounts. Visit [TobiiDynavox.com](https://www.tobii.com) or contact your local Tobii Dynavox partner.

Step 4: Calibrate

A perfect calibration score is not required to use eye tracking effectively. When you are just getting started, calibrate once without worrying too much about the scores and then let the individual practice using eye tracking. You can always revisit calibration later.



Note

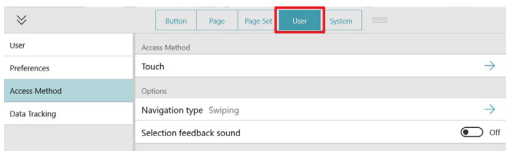
You don't need to calibrate each time you use the device.

To calibrate TD Snap:

- 1 Select the **Edit** button.

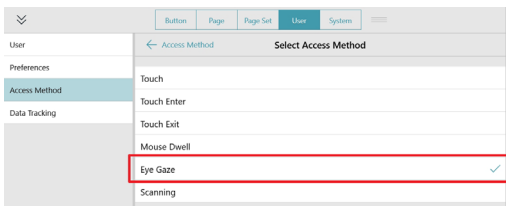


- 2 Select **User**.

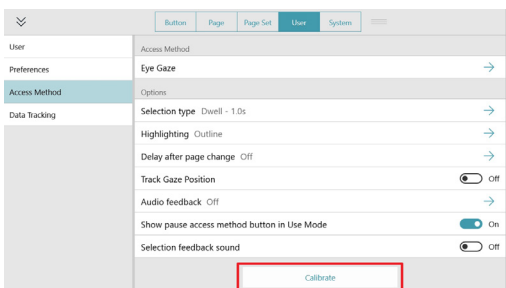


- 3 Select **Access Method**.

- 4 Select **Eye Gaze**.



- 5 Scroll down and select **Calibrate**.



To calibrate Communicator 5:

- 1 Open the **Quick Menu**.

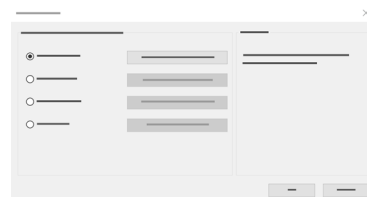
To open the Quick Menu, press Ctrl + M on your keyboard, right click with your mouse, or touch, hold, then release anywhere on the screen.



- 2 Select **Advanced Settings**.



- 3 Select **Input Method** and confirm Gaze Interaction is selected.



- 4 Select **Gaze Interaction Settings**.

Here you can change the activation type between dwell and switch, change calibration profiles, and start a new calibration.



Step 5: Learn, Practice, and Troubleshoot

Your TD I-Series device is now ready to use! Feel free to start exploring your device and apps. When you are ready to learn more, check out the TD Snap Training Cards or Communicator 5 Training Cards. The training cards teach you how to use the main features of your communication software, grow your AAC communication skills, and troubleshoot issues.



Training Cards

qrco.de/be9m4o

myTobiiDynavox.com



Your free myTobiiDynavox.com account gives you access to numerous benefits including cloud storage for backups, page set syncing and sharing, lesson plans and more!

Joining myTobiiDynavox will allow you to do the following:

- Safely back up your system
- Download free tools and resources
- Review free Core First lesson plans
- Learn about available updates
- Access Tech Support and FAQs
- Share page sets and Page Bundles



myTobiiDynavox

myTobiiDynavox.com

Additional Resources



Tobii Dynavox Learning Hub

learn.tobiidynavox.com



I-Series Product Support

qrco.de/bbBdN3



TD Facebook Community

qrco.de/TDFB



I-Series User's Manual

qrco.de/ISManual



UK Technical Support

0114 481 0011

support.uk@tobiidynavox.com