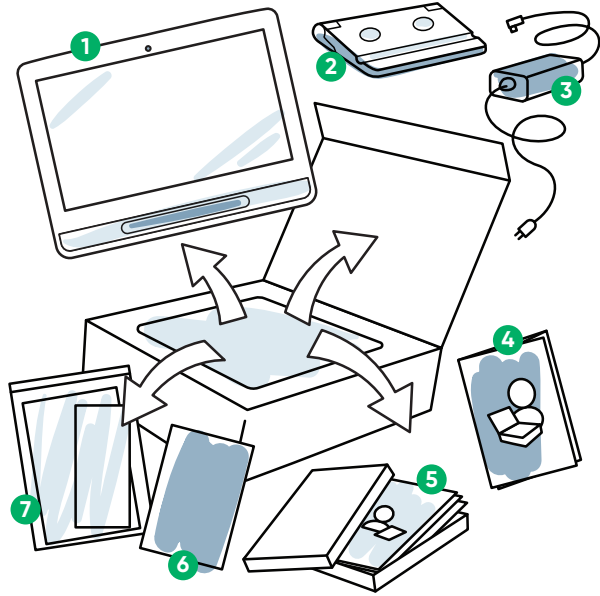


## What's in the Box?



- 1 Device
- 2 Adjustable Base
- 3 Power Cable
- 4 Getting Started Guide
- 5 Training Cards
- 6 Safety & Compliance Booklet
- 7 Document Bag

## We Are Here to Help



### myTobiiDynavox

Use your free account to Sync, share Page Sets, store backups, and more!  
Visit: [www.myTobiiDynavox.com](http://www.myTobiiDynavox.com)



### Other

Discover Tobii Dynavox App: [bit.ly/TDDiscover](http://bit.ly/TDDiscover)  
User Manual: [bit.ly/iseriedoc](http://bit.ly/iseriedoc)



### Additional Support

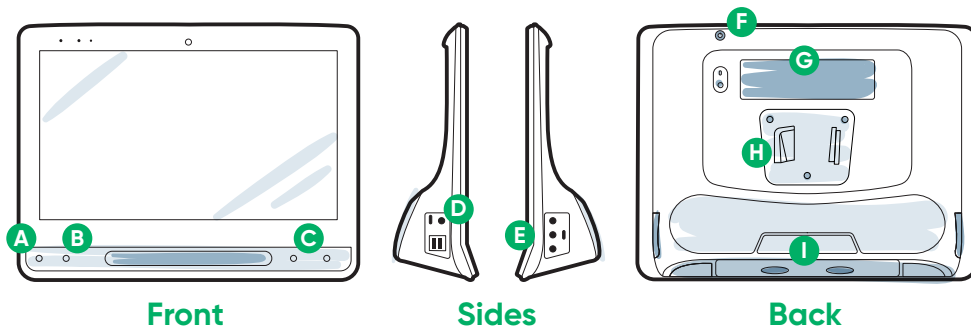
Community: [bit.ly/TDFBCommunity](http://bit.ly/TDFBCommunity)  
UK Technical Support: **0114 481 0011**

For more information about the set up process:



You can use your mobile phone or tablet to scan QR codes. If you do not have a QR code reader, download a free app.

## Getting to Know Your Device



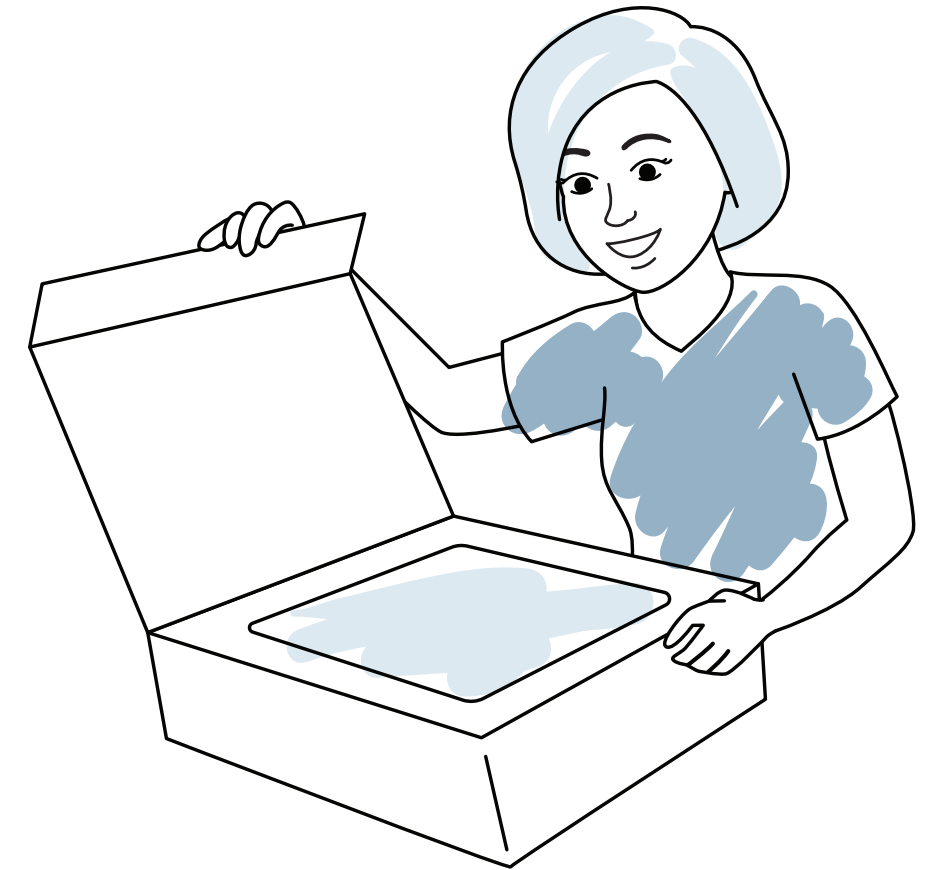
- |                              |                          |                          |
|------------------------------|--------------------------|--------------------------|
| <b>A</b> Track Status Button | <b>D</b> Power Connector | <b>G</b> Partner Window  |
| <b>B</b> Calibration Button  | <b>E</b> Switch Ports    | <b>H</b> Mounting Plate* |
| <b>C</b> Volume Buttons      | <b>F</b> Power Button    | <b>I</b> IR Transmitter  |

\*If using a Daessy Mount, you will need a Conversion Plate.

# #PowerToBeYou

Share your I-Series unboxing and first use photos and videos with [#iopenedthebox](https://twitter.com/iopenedthebox).

# Tobii Dynavox I-Series Getting Started Guide



#12007970 Tobii Dynavox I-Series Getting Started Guide v1.0 - en-UK

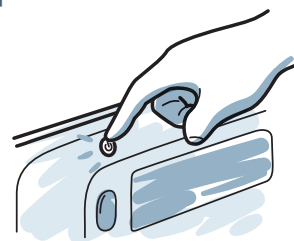
**tobii**dynavox

Follow the three steps in this guide and your new I-Series device will be set up and ready to use.

## Step 1: Initial Setup

### Start the Device

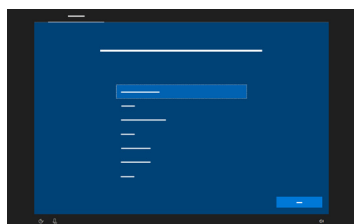
- 1 Connect the power cable to the device and plug in to an outlet.
- 2 Press the Power button.



### Setup

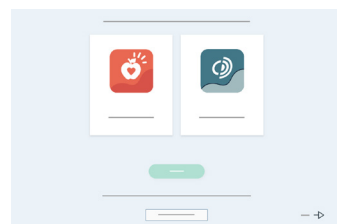
When you turn on your device, you will see one of two screens. If your device has not been pre-configured, you will be prompted to complete the Windows Setup process first.

#### Windows Setup



While this process does not require a Microsoft account, we recommend that you connect to or create a user's account and not a caregiver's account.

#### Start Up Wizard: Pick Your App



Choose which app to automatically launch when the device is turned on.

## Step 2: Mount & Position



Optimised positioning for both the device and the individual is necessary for successful use. Place the device on the mounting system or on a table using the Adjustable Base, in front of the user. If you are using Gaze Interaction, review Tips for Eye Tracking.

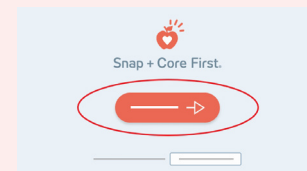
## Step 3: Communication Software Configuration



### Snap Core First Symbol-Supported Communicators

#### Snap Setup Wizard

Follow the prompts to create your new user, or restore a saved user file.



#### Grid Size

Choose a grid size that provides the most buttons for vocabulary and can be accessed accurately by the user. You can easily change it later.

#### Access Method

Choose your access method:

- 1 Select **Edit**.
- 2 Select **User**.
- 3 Select **Access Method**.
  - If using eye gaze, select **Gaze Interaction**.
  - Select the **Access Method** button.
  - Scroll down to select **Calibrate** and follow the prompts.

#### Next Steps

Pathways for Core First, a FREE resource, helps teach communication skills, using how-to-videos, goals grid, lesson plans and more. <http://bit.ly/TDPCF>



Snap Core First Training Cards will help you get started. They contain ideas for everyday use and step-by-step instructions for basic editing.



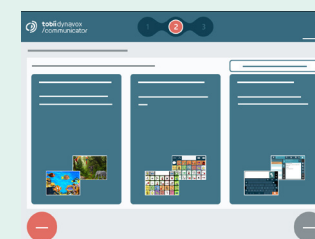
### Communicator 5 Text-Supported Communicators

#### Communicator 5 Setup Wizard

Follow the prompts to create your new user.

- If using Gaze Interaction, select Calibrate and follow the prompts.
- If you are not using Gaze Interaction, change the Input Method.

#### Select Your Home Page



#### Emerging

Best for a beginning communicator with early language skills.

#### Symbol

These pages enable communicators to build their own messages, symbol by symbol.

#### Text

Intended for individuals who will compose messages primarily with a keyboard.

#### Next Steps

Communicator 5 Training Cards will help you get started. They contain ideas for everyday use and step-by-step instructions for basic editing.



### Tips for Eye Tracking

- If calibration seems off, you can touch the Track Status button (triangle) on the front of the device to open the Track Status Box at any time. This will determine if the user's eyes are in a good position for Gaze Interaction.
- After calibrating, you will see colored markers, showing how well you calibrated in that area of the screen. Green and yellow will give you more accuracy but red is still fine to get started! You can improve this over time.
- You can customise the calibration process to meet the specific needs of the user (e.g. number of targets, stimulus type).

To learn more visit:  
[bit.ly/DevicePosition](http://bit.ly/DevicePosition)