

tobii dynamox

# The power to explore my world



## Introducing EyeMobile Plus

For all-in-one gaze-enabled communication  
and computer access on the go

Power to be You

# EyeMobile Plus gives you the power to explore your world



The EyeMobile Plus provides individuals with physical and mobility challenges, such as spinal cord injuries or ALS, all the necessary tools to communicate effectively and empowers them to access hands-free mobile computing. It combines the best in eye tracking, high-quality speakers, speech recognition, switch access for scanning, and infrared (IR) control into one solution.

With the EyeMobile Plus and included Windows Control software, users can navigate their computer, control and access apps, internet, music, e-books, social media, games and more using the natural movements of the eyes. When combined with optional Communicator 5 software, the EyeMobile Plus becomes an all-in-one bracket solution that turns Windows tablets into eye gaze-controlled Augmentative and Alternative Communication (AAC) devices.

The EyeMobile Plus can be purchased with a Microsoft Surface Pro or be paired with comparable Windows tablets, based on individual preference and style. No matter which tablet solution you choose, with the bracket's sleek and lightweight profile, all you see from the front is the eye tracker. On the back, two powerful speakers deliver excellent speech-optimized voice output and sound quality. In addition EyeMobile Plus bracket can sustain itself with energy and only draws from the tablets battery once exhausted.

This combination of integrated hardware features, easy-to-use software, and lightweight portability makes the EyeMobile Plus an ideal device for communication and mobile access, that lets you move freely, even on the go.



*The EyeMobile Plus comes with Tobii Dynavox's latest eye tracking technology, which received the 2017 Consumer Technology Association (CES) "Tech for a Better World" Innovation Award for outstanding product design and engineering.*





### **Engage with confidence**

with a compact, all-in-one solution for communication and computer access – everything you need is combined into one stylish solution.



### **Be heard loud and clear**

with two powerful, outward facing speakers that provide the user speech optimized voice output.

## EyeMobile Plus is designed to drive independence



### **Stay powered without interruption**

with extended battery performance you'll be empowered to go further, worry free.



### **Connect to your environment**

with integrated IR access that gives you the ability to control doors, lights, beds, TVs, stereos, and many other smart home functions.



# EyeMobile Plus and the Power to be You

The EyeMobile Plus bracket and Microsoft Surface Pro tablet together, provide a perfectly harmonized system for communication and independence.

## An all-in-one solution

When combined with optional Communicator 5 software, the EyeMobile Plus becomes a fully-fledged communication solution that gives you all the benefits of eye gaze-enabled control in one sleek, lightweight design. The bracket also lets you unlock the full potential of the powerful Surface Pro tablet (which can serve as a full laptop replacement) with included Windows Control software. Now, you can use Windows 10 with all its benefits and access hundreds of thousands of apps together with a best-in-class performing tablet.

## Be heard clearly with speakers optimized for speech

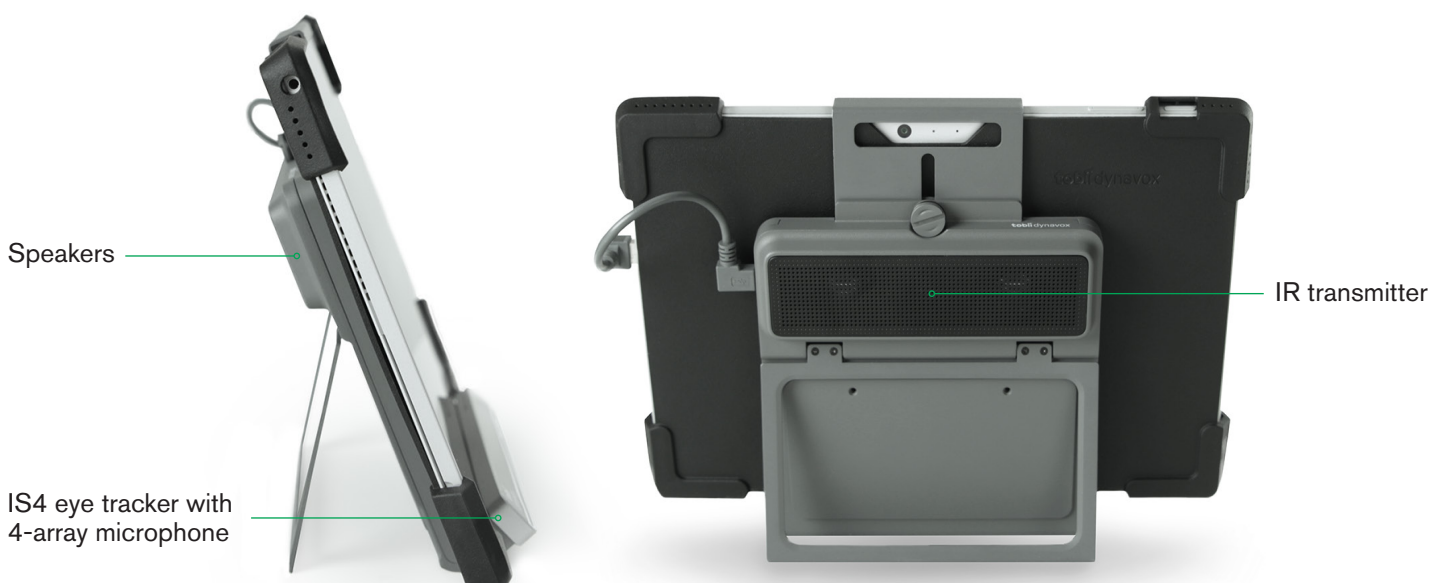
The EyeMobile Plus features two powerful, outward facing speakers that provide the user with speech-optimized voice output. With this built-in speaker solution, you can engage with confidence knowing you will be heard, even from across the room. The excellent sound quality of the speakers also means that when you're not busy communicating, you can enjoy turning up the volume to your favorite streaming music channel – and hear it loud and clear.

## Go further with worry-free battery performance

Say goodbye to battery life anxiety. With the battery configuration of the EyeMobile Plus, you no longer need to worry about unexpectedly losing power, computer access, or your ability to communicate. The EyeMobile Plus bracket can sustain itself with energy and once exhausted, the bracket will use power from the tablet. You can also keep close track of your battery performance with the new battery watchdog which lets you monitor the remaining power on your tablet and the bracket, as well as any power exchange between them.

## Connect with your environment

The built-in IR transmitter, combined with Windows Control and Communicator 5 pagesets, gives you the ability to access IR devices in your surroundings remotely. Now you can choose your favorite TV program or turn up the volume to your favorite song. With the EyeMobile Plus, you can take control of devices like lights, telephones, TVs, DVD players, and more, all with gaze interaction, letting you connect with the environment effortlessly.





# EyeMobile Plus gives you the tools for your journey

The robust combination of features, software, and computer controls, make the EyeMobile Plus an ideal device for portable eye gaze communication and interaction.

## Multiple access methods

The EyeMobile Plus provides multiple input methods and the right software titles to suit your needs with the ability to be controlled via eye gaze, voice control, switch input and touch. Together with Tobii Dynavox Windows Control software, it provides excellent and ergonomic computer access. Bundling these multiple access methods with Tobii Dynavox Communicator 5 turns the EyeMobile Plus into a full-fledged, mobile communication device.

## Greater control with combined eye tracking and switch

Combining eye tracking and switch input gives you the ability to control your computer more intentionally. The EyeMobile Plus features two switch ports, and our software Communicator 5 is designed for switch scanning and with Windows Control you can use a switch to execute a click. This enables more intentional eye tracking, empowering you with more control and precision.

## Clear commands and dictation with speech recognition

Users who are able to speak can use speech recognition to dictate and control the computer. The EyeMobile Plus has a built-in, high-quality 4-array microphone system, which is optimized for speech recognition. In Windows 10, the Cortana personal assistant can be controlled via voice and lets you search the file system, online search engines or handle your calendar. Additionally, because of the microphones noise cancellation factor, you can still be heard clearly in noisy public environments.

## Get started easily and customize your way

In only a few steps, you can adjust the software to fit your specific needs, so you spend less time configuring settings, and can jump directly into communicating, navigating and interacting. All settings and features are gaze-enabled, which gives you the ability to calibrate as well as change dwell time, users, languages, input methodology and much more completely by yourself.

## Windows Hello camera for sign in

With Windows Control, every sign-in process can be seamless. Now you can automatically sign into Windows 10 by using your eye tracker as a Windows Hello camera. Making it easier than ever to get started quickly. If your Windows 10 computer is not set to fully go to sleep, you can also unlock the screen with your presence and Windows Hello.

## Access thousands of apps

With Windows Control, you can access hundreds of thousands of social, professional, entertainment and educational apps such as Hulu, Netflix, YouTube, Pandora, Kindle, Facebook and Twitter as well as the full Microsoft Office suite. So you can stimulate your mind, express yourself creatively, get social, and engage on your terms.

---

## Expertise and experience you can trust

We believe everyone deserves a voice, the opportunity to gain literacy, and to achieve independence. The EyeMobile Plus gives you the freedom to explore life on your terms, without having to worry about a device that limits where or how you communicate. Purpose-built to support portable communication, the EyeMobile Plus is the innovative result of a highly-experienced team from Tobii Dynavox made up of educators, clinicians, engineers, and professionals who are passionate about empowering others to reach their full potential and maintain independence.



# EyeMobile Plus is perfect for your next journey

With the EyeMobile Plus, you don't have to worry about having to learn new hardware and interaction methods frequently. The device is compatible with most Tobii Dynavox software titles, which means you can keep the same device as you explore additional software options. Once the tablet is outdated, you can simply replace it and continue using the EyeMobile Plus bracket. This keeps the investment in time, effort, and hardware low so you can focus on what's next.

## Technical Support and Warranty

EyeMobile Plus comes with a 2-year manufacturer's warranty. Additional protection, like TD Care, can be purchased separately. TD Care covers any repairs to your device due to damage. Please contact your local Tobii Dynavox representative for pricing information.

## Product Specifications

### Tobii Dynavox EyeMobile Plus Bracket

<b>Type/Model</b>	Tobii Dynavox EyeMobile Plus
<b>Processing Eye Tracker Unit</b>	IS-4B Tobii EyeChip™ with fully embedded processing
<b>Working distance</b>	45 – 85 cm (17.7 – 33.5 in)
<b>Track Box<sup>1</sup> Dimensions at 65 cm (26") Distance (w x h)</b>	>35 cm x 30 cm ellipse >14" x 12"
<b>Data Streams</b>	Eye tracking (gaze point, eye position, etc.) IR image stream at 30 Hz
<b>Mounting bracket</b>	Built-in table stand for table top use. Tobii Dynavox QR adapter plate for Daessy and REHAdapt. VESA adapter plate available as peripheral. <sup>2</sup>
<b>Ports</b>	2 x 3.5 mm Switch Connector Interface 1 x USB 2.0 1 x Micro USB 3.0 1 x 5 VDC 4.4 mm Barrel Power Connector
<b>Microphone</b>	Microphone Array consisting of 4 Microphones
<b>Speakers</b>	2 x 3.5W
<b>IR Remote Control</b>	Integrated IR module with library of preprogrammed devices
<b>Weight of bracket</b>	~670 g (~22.9 oz)
<b>Dimensions of bracket (w x h x d)</b>	170 x 200 mm – 230 x 45 mm (6.69 x 7.87 in – 9.05 x 1.77 in)
<b>Tobii Certified Tablets<sup>3</sup></b>	Microsoft Surface Pro
<b>Hours of Operation<sup>4</sup></b>	Depends on tablet, EyeMobile Plus will work as long as the tablet has charge left. See Hours of Operation with Surface Pro
<b>Power Supply</b>	5 VDC 3A AC Adapter

### EyeMobile Plus featuring Microsoft Surface Pro 4

<b>Model</b>	Microsoft Surface Pro 4 – 128 GB / Intel Core i5 – 4GB RAM
<b>Hours of Operation<sup>4</sup></b>	Up to 4 hours, normal usage. When idle, device lasts up to 11 hours.
<b>Operating System</b>	Windows 10
<b>Dimensions for tablet only</b>	292 x 201 x 8.5 mm (11.5 x 7.9 x 0.33 in)
<b>Dimensions with bracket</b>	292 x 220 x 45 mm (11.5 x 8.66 x 1.77 in)
<b>Weight for tablet and bracket</b>	~1440 g (~3.17 lbs)



<sup>1</sup> Track box describes the space in front of the eye tracker where the user must have at least one eye to get gaze data. The eye tracker is at a 20° angle looking upward from below the screen.

<sup>2</sup> VESA mount can't be used during operation of table stand.

<sup>3</sup> Other tablets that fulfill the system requirements and supported dimensions might be compatible, as long as the USB port and charging connector are not interfering with the EyeMobile Plus bracket.

<sup>4</sup> Normal usage is defined as: Screen always On, Brightness 50%, WiFi and Bluetooth Off.

Eye tracking and synthetic speech used continuously for 5 minutes every 20 minutes.

Idle is defined as: Screen always On, Brightness at lowest setting, WiFi and Bluetooth Off. Device idle.

With reservations for errors. Changes may be made without any further notice. All trademarks belong to their respective owner.