

A photograph of three children sitting on a green lawn, each using a tablet. The child in the foreground is a girl with long brown hair, wearing a patterned shirt, looking at a pink tablet. Behind her, a boy in a grey shirt is using a blue tablet, and another child in a red shirt is using a white tablet. The background is a blurred brick wall.

tobii dynamox

Portfolio of Products

Communication & Computer Access Solutions

A comprehensive portfolio of products designed to
empower communication and independence.

Power to be You

I-12+

Ready when you are
Stay social
Say it with your eyes



Device Overview

The I-12+ enables effective communication in all forms – from voice output, environmental control, computer access to long distance communication. The I-12+ has a rugged design, large 12 inch screen, and can be controlled through eye gaze via an optional built in IS4 eye tracker.

I-15+

Built to be used
Easily engage and effortlessly connect
Let your eyes do the talking



The I-15+ enables effective communication in all forms – from voice output, environmental control, computer access to long distance communication. The I-15+ has a rugged design, large 15 inch screen, and can be controlled through eye gaze via the built in optional IS4 eye tracker.

Funding Available	Yes*	Yes*
Communicator Profile	The I-12+ is ideal for individuals who need to control a communication device through eye gaze interaction. The I-12+ is easily mounted for convenient access and portability.	The I-15+ is ideal for individuals who need to control a communication device through eye gaze interaction and require large letters and symbols because of their visual or physical skills. The I-15+ is easily mounted for convenient access and portability.
Included Software	<ul style="list-style-type: none"> ▪ Snap + Core First and Communicator 5 or Compass ▪ Snap Scene ▪ Smyle Mouse 	<ul style="list-style-type: none"> ▪ ALL ▪ Boardmaker Student Center App ▪ Gaze Viewer
Included Software	<ul style="list-style-type: none"> ▪ Snap + Core First and Communicator 5 or Compass ▪ Snap Scene ▪ Smyle Mouse 	<ul style="list-style-type: none"> ▪ ALL ▪ Boardmaker Student Center App ▪ Gaze Viewer
Languages Available	<p>Snap + Core First: English (US, UK), Bilingual English/Spanish (US), German, Swedish, Dutch, Latin American Spanish. Communicator: English (US/UK), Chinese, Danish, Dutch, Finnish, French, German, Italian, Japanese, Norwegian, Portuguese, Spanish (Americas), Swedish.</p> <p>Compass®: English, German, Spanish, Swedish, Norwegian, Danish, Dutch, French.</p>	
Synthesized Speech	<p>Snap + Core First and Communicator use Acapela voices, available in English (US, UK, AUS), German, Spanish (US), French (CDN, FR), Swedish, Norwegian, Danish, Dutch, Finnish, Japanese, Portuguese (BR).</p> <p>Compass uses IVONA voices, available in English (US, UK, AUS), German, Spanish (US, SPN), French (FR, CDN), Portuguese (BR).</p>	
Access Methods	Eye gaze tracking, touchscreen, keyboard, mouse/trackball, switch scanning with audio feedback, head tracking, keyguards available to support direct access	
Size	12.1" x 10.8" x 4.1" (30.7 x 27.4 x 10.5 cm)	14.5" x 12.8" x 4.4" (36.9 x 32.6 x 11.2 cm)
Weight	6 lbs. 2 oz. (2.8 kg)	8 lbs. 4 oz. (3.8 kg)
Processor	Intel® Celeron Quad Core Processor J1900 (2M Cache, 2 Ghz)	
Average Battery Run Time	10.5 hours without eye tracker activated, 9 hours with eye tracker activated	9.5 hours without eye tracker activated, 8 hours with eye tracker activated
Screen Size	12.1" (30.7cm)	15.0" (38.1 cm)
Ports	HDMI, 2 USB 2.0, 1 USB 3.0, Ethernet, 2 Switch Connector Interface, Headphone Jack for auditory feedback, Power Connector	
Connects to PC via	Memory Stick, myTobiiDynamox Cloud	
Included Accessories	<ul style="list-style-type: none"> ▪ Carrying Case 	<ul style="list-style-type: none"> ▪ Keyboard
Optional Accessories (sold separately)	<ul style="list-style-type: none"> ▪ Wired or Bluetooth switches ▪ HeadMouse Extreme® 	<ul style="list-style-type: none"> ▪ TrackerPro® ▪ Keyguards
	<ul style="list-style-type: none"> ▪ ConnectIT or Daessy Mounts ▪ Table Stand 	<ul style="list-style-type: none"> ▪ Transportation Carry Case ▪ Accessible Carry Case

*The device may be ordered in Standard or Dedicated setups. The Dedicated setup is designed specifically to run communication software only. The user of this setup meets the "Speech generating device" requirements of Medicare, Medicaid and other insurers who generally follow Medicare's Speech Genera

PCEye Plus

Navigate your PC seamlessly
 Built-in speech recognition and switch function
 EyeR (IR) for environmental control



The PCEye Plus is a peripheral eye tracker that provides the most efficient and ergonomic way to access your world. By combining advanced eye tracking technology, speech recognition, switch and IR control, it enables you to connect with your computer and surrounding environment seamlessly.

PCEye Mini

Smallest and most robust eye tracker available
 Faster, more relaxed computer access
 Extreme portability



The PCEye Mini is our eye tracking platform with the highest performance to date - a combination of excellent robustness, accuracy and precision. It replaces the standard keyboard and mouse, allowing you to navigate and control your laptop or desktop computer using only your eyes.

EyeMobile Mini

Hands-free access to Windows 10
 Mobile-specific design
 Supports switch and touch input



The EyeMobile Mini is a hands-free computer access solution for use on Windows 7, 8 and 10 tablet devices. With Gaze Selection and the Functions Overlay, you are able to access all functions as well as the 600,000 apps that run on Windows tablets without the need for special apps designed for gaze interaction or eye control. Includes IS4 eye tracker.

No	No	No
The PCEye Plus is ideal for verbal access users that have limited movement of the hands or fingers, such as those with spinal cord injuries or ALS. The advanced eye tracking technology with Windows Control software, combined with built-in microphone for speech recognition and included EyeR dongle provide the most efficient and ergonomic way to control all the functions on a PC.	Eye Tracking computer access solution specifically designed for those with mobility impairments. Eye tracking devices provide fast, natural and precise computer access and greater independence. The PCEye Mini is a stand alone, snap-on peripheral eye tracker that brings eye tracking to standard desktop and laptop PC's.	Eye Tracking computer access solution specifically designed for those with mobility impairments. Eye tracking devices provide fast, natural and precise computer access and greater independence.
Windows Control in some bundles	Windows Control in some bundles	Windows Control in some bundles
Windows Control: Afrikaans, Arabic, Armenian, Bulgarian, Chinese (Simplified), Chinese (Traditional), Czech, English, Estonian, Farsi, French, Greek, Hindi, Hungarian, Icelandic, Korean, Polish, Portuguese, Romanian, Russian, Slovakian, Slovenian, Spanish (Mexican), Spanish (Spain), Turkish, Xhosa, Zulu	Windows Control: Afrikaans, Arabic, Armenian, Bulgarian, Chinese (Simplified), Chinese (Traditional), Czech, English, Estonian, Farsi, French, Greek, Hindi, Hungarian, Icelandic, Korean, Polish, Portuguese, Romanian, Russian, Slovakian, Slovenian, Spanish (Mexican), Spanish (Spain), Turkish, Xhosa, Zulu	Windows Control: Afrikaans, Arabic, Armenian, Bulgarian, Chinese (Simplified), Chinese (Traditional), Czech, English, Estonian, Farsi, French, Greek, Hindi, Hungarian, Icelandic, Korean, Polish, Portuguese, Romanian, Russian, Slovakian, Slovenian, Spanish (Mexican), Spanish (Spain), Turkish, Xhosa, Zulu
N/A	N/A	N/A
Eye tracking, switch, switch-scanning, speech recognition	Eye tracking	Eye tracking, touch
12.7" x 0.87" x 0.71" (322 x 22 x 18 mm) 9.9 oz (280 g)	6.69" x 0.71" x 0.51" (17 x 1.8 x 1.3 cm) 2.1 oz (59 g)	11.4" x 7.1" – 9.0" x 1.77" (29 x 18 – 23 x 4.5 cm) Depends on tablet. EyeMobile Bracket + PCEye Mini weight 0.86 lbs (389 kg)
Tobii EyeChip with fully embedded processing	Tobii EyeChip with fully embedded processing	Tobii EyeChip with fully embedded processing
Dependent on PC power source	Dependent on PC power source	Dependent on tablet PC power source (Avg ~6 hrs)
Works with up to 27" monitors	Works with up to 19" monitors	Depends on Tablet (Tobii Dynavox's Standard Package includes latest Microsoft Surface Pro 4 tablet - 12.0" (30.7cm))
1 x 3.5 mm Switch Connector Interface	N/A	Current Microsoft Surface Pro configuration includes one USB 3.0, microSD Card Reader, Headset Jack, Mini Display Port, Cover Port.
USB 2.0	Single USB 2 to either laptop or desktop PC	Single USB 2 to Windows 7, 8 or 10 tablet PC
<ul style="list-style-type: none"> • EyeR (IR) Dongle with Virtual Remote • Switch Cable • USB Extension Cable • Mount 	<ul style="list-style-type: none"> • PCEye Mini Carrying Case • USB Extension Cable • Mounting Plate 	<ul style="list-style-type: none"> • PCEye Mini Carrying Case • USB Extension Cable • Mounting Plate
<ul style="list-style-type: none"> • Additional USB extension cables and mounting plates are also available separately. 	<ul style="list-style-type: none"> • Additional USB extension cables and mounting plates are also available separately. 	<ul style="list-style-type: none"> • Additional USB extension cables and mounting plates are also available separately.

will not have access to other applications, like environmental controls. ting device guidelines.

I-110

Ultra-rugged and durable design
Projects powerful sound and clear speech
Water-resistant



Indi®

All-in-one, consumer-focused speech tablet
Loudest speakers available
No wait, receive immediately



Indi® 7

Compact and portable
Integrated, outward-facing speakers
Numerous access methods



The Tobii Dynavox I-110 is the ultimate touch-based speech generating device for AAC, tailored for real life. Featuring a purpose-built, ultra-rugged design, naturally intuitive user interface, and an IP54 classification, the I-110 delivers exceptional durability, performance, and reliability.

Indi is the first all-in-one, consumer-focused speech tablet for symbol-based communicators. It has an easy-to-hold, ergonomic design, is ultra-portable, and is ready to go out-of-the-box. Additionally, Indi has powerful, outward facing, built-in speakers providing clear speech output.

Small, yet powerful, Indi 7 is an all-in-one, Windows-based speech tablet for communicators on the go. Designed specifically for AAC, Indi 7 comes with all of your needs fully integrated including speakers, Snap + Core First or Communicator 5 software, and access method compatibility.

Yes*

Yes*

Yes*

If you're just getting started, jump into Snap Scene and then move into symbol communication. If you're a symbol-based communicator, use Snap + Core First to start communicating quickly. If you are a literate, independent user, Communicator 5 gives you advanced user functionality and control while you communicate.

Indi is ideal for non-verbal or verbally limited users that can interact with a device using their hands or other access methods like switch-scanning or head-mouse. The tablet can also be mounted for convenient access and portability using the optional Durable Case.

The Indi 7 is ideal for individuals of all ages with complex communication needs who require a portable communication system, providing robust communication software. It is designed to complement natural interaction with its sleek and durable design.

- Snap + Core First
- Communicator 5
- Compass
- Snap Scene
- ALL
- Boardmaker Student Center App

- Snap + Core First and Communicator 5 or Compass

- Snap + Core First and Communicator 5 or Compass

Snap + Core First: English US (US, UK), Bilingual English/Spanish (US), German, Swedish, Dutch, Latin American Spanish. Communicator 5: English (US/UK), Swedish, German, Norwegian, Danish, Spanish, French, Italian, Dutch, Finnish. Compass: English, German, Spanish, Swedish, Norwegian, Danish, Dutch, French.

Snap + Core First: English (US, UK), Bilingual English/Spanish (US), German, Swedish, Dutch, Latin American Spanish. Communicator 5: English (US, UK), German, Spanish, Swedish, Norwegian, Dutch, Danish, Finnish, French, Italian, Brazilian Portuguese, Japanese, Chinese. Compass: English, German, Spanish, Swedish, Norwegian, Danish, Dutch, French.

Snap + Core First and Communicator use Acapela voices, available in English (US, UK, AUS), German, Spanish (US), French (CDN, FR), Swedish, Norwegian, Danish, Dutch, Finnish, Japanese, Portuguese (BR). Compass: English, German, Spanish, Swedish, Norwegian, Danish, Dutch, French.

Snap + Core First and Communicator use Acapela voices available in English (US, UK, AUS), German, Spanish (US, ES), French (CDN, FR), Swedish, Norwegian, Danish, Dutch, Finnish, Japanese, Portuguese (BR). Snap + Core First also uses voices provided by the operating system. Compass: English, German, Spanish, Swedish, Norwegian, Danish, Dutch, French.

Touchscreen, switch-scanning, head-mouse, touch with keyguards

Touchscreen, switch-scanning, head-mouse, touch with keyguards

10.1" x 7.3" x 1.4" (257 x 185 x 35 mm)
2.4 lb (1100 g)

9.6" x 6.9" x 1.4" (24.4 x 17.6 x 3.5 cm)
1.69 lbs. (765g)

8" x 5.7" x 1.4" (20.3 x 14.5 x 3.65 cm)
1.27 lbs. (.57 kg)

Intel Atom x5-Z8350

Intel Atom Z8350 – 4 cores, 2MB cache, 1.92Ghz

>10 hrs normal usage

More than 8 hours of normal usage

10.1"

10.1" (25.65 cm)

7"

1 x USB 3.0 full size, 2 x 3.5 mm Switch Ports, Headphone/Microphone Jack, 15 VDC Charging Port

2 Micro-B USB 2.0, 1 Micro-B USB 3.0, Headphone/Microphone Jack, 12 VDC Charging Port

1 Micro USB 2.0, Headphone/Microphone Jack, 12 VDC Charging Port

myTobiiDynavox cloud

myTobiiDynavox cloud

USB Cable, myTobiiDynavox cloud

- Durable Gray Case
- Shoulder Strap/Handle
- Reversible Mount Plate or a ConnectIT Mount Plate with a Rigid Handle

N/A

N/A

- Durable Case Kit for Keyguards
- Carry Bag
- Stylus
- Keyguards

- Durable Case: Shoulder Strap and built-in Mount Plate, Carry Handle, and Kickstand
- Durable Case with Keyguard Holder: Shoulder Strap and built-in Mount Plate, Carry Handle, and Kickstand
- Keyguards (for Durable Case with Keyguard holder)

- Durable Case with Keyguard Holder and Shoulder Strap
- Keyguards

Speech Case with iPad

Light, yet durable
Familiar technology for many users
Created specifically for AAC



New!

Speech Case Pro with iPad Pro

Large Screen Size
Mountable for easy access
Unmatched sound



New!

The Speech Case with iPad® is an iOS-based speech tablet designed for Augmentative and Alternative Communication (AAC). Equipped with extra loud speakers, Snap + Core First® communication software, 1-year telephone support, and more, these speech tablets provide a true communication solution. For users who prefer the iOS platform, you can now experience AAC the Tobii Dynavox way. The Speech Case can also be purchased alone or bundled with Snap + Core First.

• Yes (SC Tablet*)

The Speech Case with iPad is for individuals of all ages with speech and language disabilities, including those with Autism, Cerebral Palsy, Downs Syndrome, Intellectual Disabilities, and early onset neuro-muscular diseases such as ALS.

• Snap + Core First

Snap + Core First: English (US, UK), Bilingual English/Spanish (US), German, Swedish, Dutch, Latin American Spanish.

Snap + Core First use Acapela voices available in English (US, UK, AUS), German, Spanish (US, ES), French (CDN, FR), Swedish, Norwegian, Danish, Dutch, Finnish, Japanese, Portuguese (BR). Snap + Core First also uses voices provided by the operating system.

Touchscreen, switch-scanning, touch with keyguards

9.8" x 7.2" x 1.8" (249 x 182 x 46mm)

2.28 lbs with iPad, 1.25 lbs without iPad

64 bit A9 processor

More than 10 hours of normal usage

9.7"

Lightning Port, Headphone jack, Micro USB for charging, 2 Switch Ports

USB Cable, myTobiiDynavox cloud

- Shoulder Strap
- Power Adapter
- Power Cord
- Power Tips (4)

- Keyguard Holder
- Keyguards
- ConnectIt Mounting Plate

• Yes (SC Pro Tablet*)

The Speech Case Pro with iPad Pro is an ideal speech tablet for everyone, however, this is especially suited for those who may require larger letters or symbols due to visual or physical skills.

• Snap + Core First

12.4" x 9.2" x 1.8" (316 x 234 x 46 mm)

3.33 lbs with iPad Pro, 1.8 lbs without iPad Pro

64 bit A10X Fusion Processor with embedded M10 coprocessor

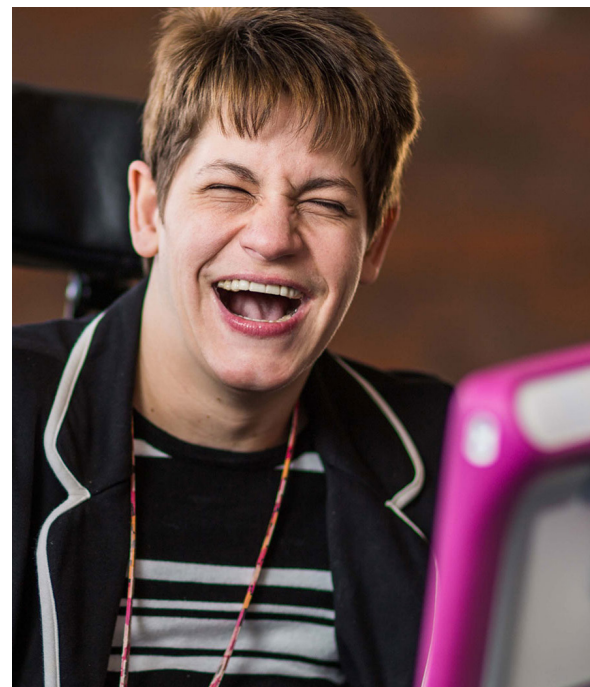
More than 10 hours of normal usage

12.9"

USB Cable, myTobiiDynavox cloud

- Shoulder Strap
- Power Adapter
- Power Cord
- Power Tips (4)

- Keyguard Holder
- Keyguards
- ConnectIt Mounting Plate



Software Communication Solutions

At Tobii Dynavox, we're proud to offer a suite of software solutions to best support you no matter where you are on your communication journey. Whether you're just beginning, or are fully literate, you are sure to find a solution to best fit your needs. In addition, with our software, have the peace of mind knowing that there is always a new software title to help reach your communication goals.

Communicator Type	Emergent	Context-Dependent	Independent
Associated Abilities	<ul style="list-style-type: none"> Requires the support of a communication partner Begins to use simple and concrete symbols Communicates best in familiar or motivating activities 	<ul style="list-style-type: none"> Uses symbols spontaneously to communicate basic needs Starts to understand more abstract symbols Begins to develop basic literacy skills 	<ul style="list-style-type: none"> Has literacy skills that are on par with same-age peers Able to talk about a broad range of age-appropriate topics Combines single words, spelling, phrases and complete sentences to create new messages
Software Solutions	<p>The diagram shows the following mappings:</p> <ul style="list-style-type: none"> Snap Scene (blue icon): Emergent Snap + Core First (red icon): Context-Dependent Compass (green icon): Context-Dependent to Independent Communicator 5 (grey icon): Independent ALL (blue icon): Context-Dependent to Independent Boardmaker (red icon): Context-Dependent 		

Communicator 5

A more efficient way to communicate

Tobii Dynavox Communicator 5 is a comprehensive AAC software that provides a voice and independence to those in need of communication solutions. It offers ready-made communication pages, on-screen keyboards, intuitive tools, and so much more!



Purposeful communication

Communicator's benefits for adult literate users include the frequency-based word prediction, built-in grammar functions, word conjugation and access to Windows desktop and applications.

Individuals who use eye-tracking also greatly benefit from Communicator 5 because it supports continual growth with eye tracking devices.

Speed and accuracy

Communicator lets users who cannot read or write use communication symbols or other pictures to support their interactions. It ships with over 15,000 SymbolStix symbols and other standard communication symbol and picture libraries are supported.

High quality voices

Communicator comes with a high-quality speech synthesis engine that reads the text and symbols you produce. A clear and coherent voice, specific to your language, speaks messages for you.

Control your environment

You can use infrared light (IR) transceivers to control your TV, DVD player, and games. You can also use it to adjust the position of your bed, open doors, turn lights on or off, and more.

Keep in touch with friends

Easily communicate via online chat, email and text message. You can even make a phone call using the synthetic voice*.

Access to your Windows computer

Not only does Communicator 5 give you access to the functionality within the software, but it also gives you control over the Windows environment. Control any Windows application. This is done via the Communicator Windows keyboard and Tobii Dynavox Gaze Interaction Software.

Supports all input methods

Communicator supports input via touch screen, mouse click, mouse dwell, joystick, head house, or eye control and has many adjustable settings for your personal preference.

Harness the power of myTobiiDynavox.com

Choose Snap + Core First, Compass or Communicator and start harnessing the power of myTobiiDynavox — your personal website for managing and backing up your communication tools, connecting with your entire communication support team, and sharing communication pages.

Upload, store, share, manage and learn...

With myTobiiDynavox, you can also...

- Download additional pagesets and voices
- Purchase apps and software
- And, so much more!



Early Intervention Bundle

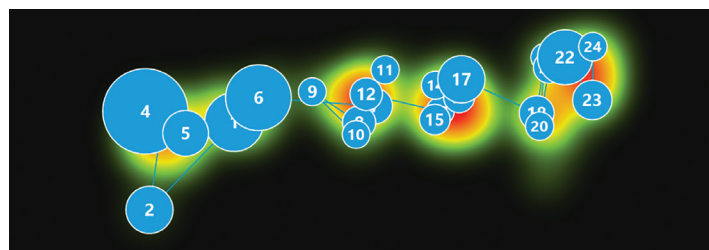
The Early Intervention Bundle will help to set your child on the path to language success. Includes Snap Scene – an instant scene-based communication and language learning app, **ALL** – a trail-blazing reading program to help non-verbal students learn how to read, and **Pathways for Snap Scene** – a one-of-a-kind app for Snap Scene that is packed with expert advice.



Snap Scene and ALL are available for the iPad from iTunes and for Windows and Tobii Dynavox Indi, Indi 7 and I-Series+ devices from mytobiidynavox.com

Gaze Viewer

Gaze Viewer is an assessment tool that helps you understand an individual user's physical capabilities, understanding, and use of an eye tracker. When combined with an eye tracker, you can record real eye tracking data from any application, whether from the Internet or e-books, games, movies and more.



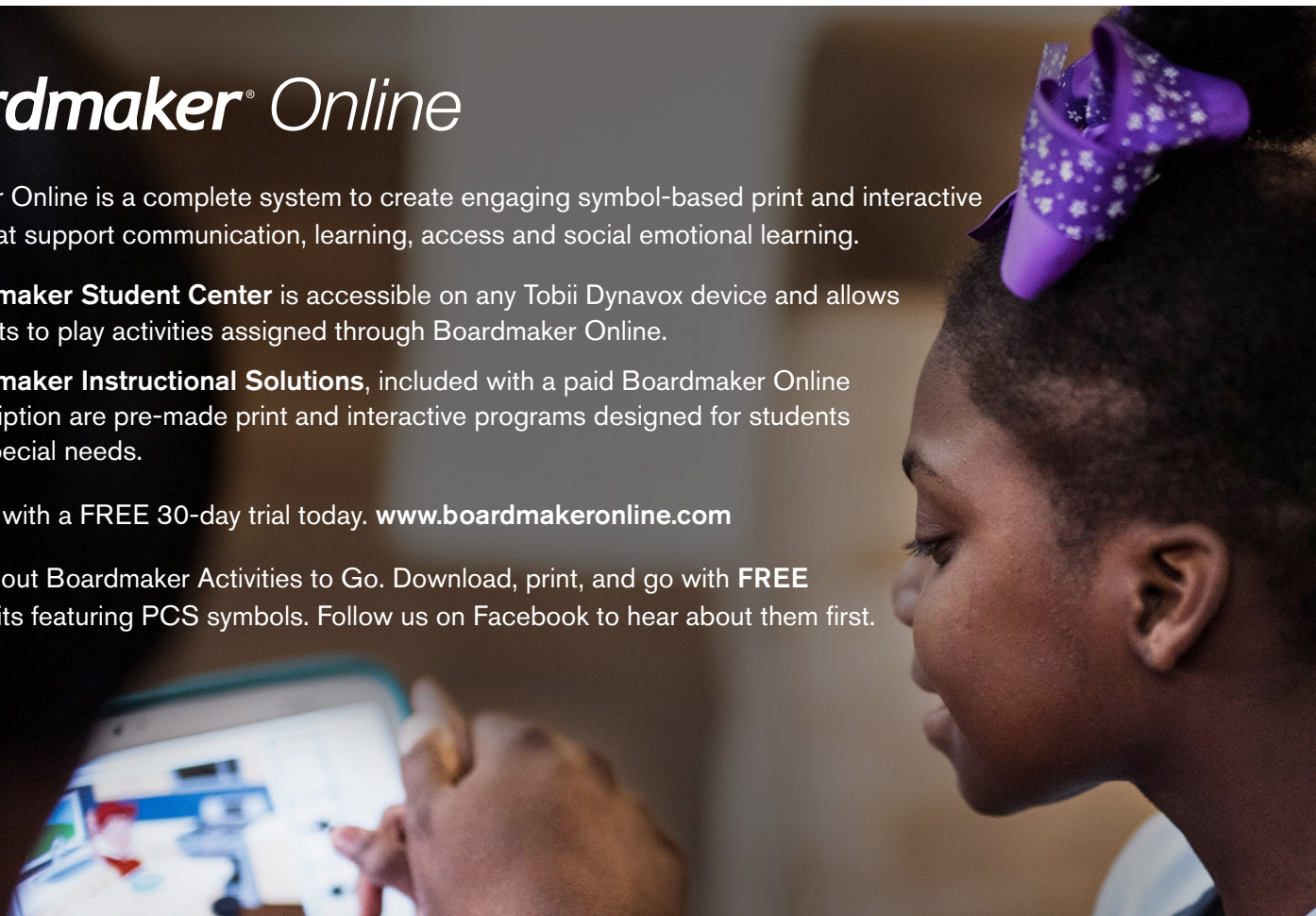
Boardmaker® Online

Boardmaker Online is a complete system to create engaging symbol-based print and interactive materials that support communication, learning, access and social emotional learning.

- **Boardmaker Student Center** is accessible on any Tobii Dynavox device and allows students to play activities assigned through Boardmaker Online.
- **Boardmaker Instructional Solutions**, included with a paid Boardmaker Online subscription are pre-made print and interactive programs designed for students with special needs.

Get started with a **FREE** 30-day trial today. www.boardmakeronline.com

Plus, check out Boardmaker Activities to Go. Download, print, and go with **FREE** thematic units featuring PCS symbols. Follow us on Facebook to hear about them first.



Snap + Core First®

The power to fulfill your potential

Snap + Core First is a symbol-based, interactive and engaging software solution that meets each communicator wherever they are on their communication journey and evolves with them as they grow. At the heart of Snap is Core First, a pageset that is centered on Tobii Dynavox's systematic delivery of the Core Word framework, Topics, QuickFires, Behavior Supports, Word Lists, and Keyboards.

Start communicating immediately

With tools and supports like Core Words and Topics, communicators are empowered to initiate and guide the conversation. Snap also has the easiest navigation and a tool bar to support you as you move around the system.

Easy customization and consistency

Snap features a new user interface for easy editing and grid size changes, and features common functions, quicker actions, and a new Search tool for finding words quickly.



Pave your path to literacy

Core First helps you continuously build vocabulary skills and takes advantage of motor learning by introducing new vocabulary systematically and purposefully. It is built on three pillars for communication success:

- **Growth** – Core First was designed for you to move forward on your communication journey, and as you evolve, Core First will evolve with you.
- **Engagement** – Quick, real-time conversations about topics that are most important to users are possible thanks to the tools provided.
- **Literacy** – No matter your starting point, you can continuously grow your skills and build upon them – making literacy possible!



Snap + Core First for iOS and Windows

Install on any iPad or Windows 10 device. Learn more at tobiidynavox.com/snap



Pathways for Core First

FREE companion app with expert lessons, tips, videos, etc., for successful implementation. Available for iOS or Windows. Learn more at tobiidynavox.com/snap

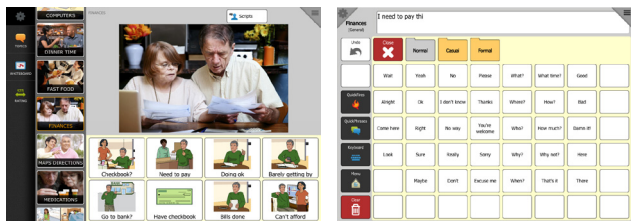
Compass

Communication without compromise

Tobii Dynavox Compass is the innovative, flexible, and robust software solution that empowers individuals with complex communication needs. Supported through multiple communication tools, pagesets, access features, and so much more, Compass creates a world of communication possibilities.

Communicate with confidence

Support everyday conversations with a full-breadth of pre-stored communication symbols, pictures, words, and phrases.



Connect through communication

Compass provides fast and efficient communication, providing the largest variety of content available in any AAC solution, including integrated core word strategy, rate enhancement methods, and more.

Chart your course

With multiple communication pagesets to choose from, including the one-of-a-kind Stroke & Brain Injury Persona, you have the opportunity to customize Compass to your needs.



Compass App

Compass is also available as an affordable app! Learn more at tobiidynavox.com/en-US/compass

Illustrations and specifications do not necessarily apply to products and services offered in each local market. Technical specifications are subject to change without prior notice. All other trademarks are the property of their respective owners.



Accredited by the Joint Commission for the Accreditation of Healthcare Organizations. FDA Registered.