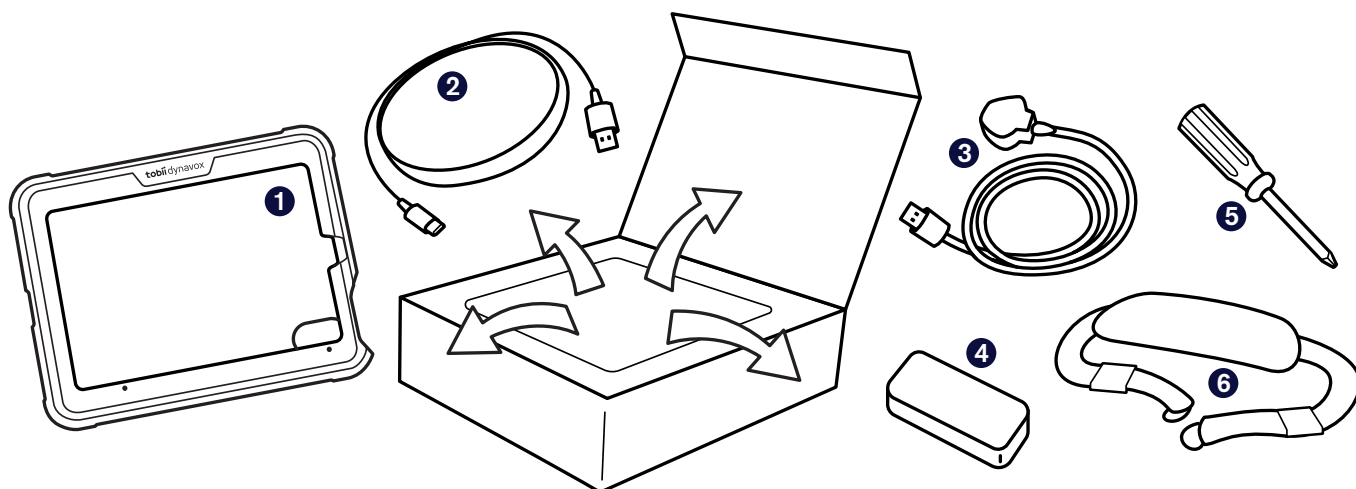


Getting Started Guide

# TD Speech Case Mini



## What's in the Box?

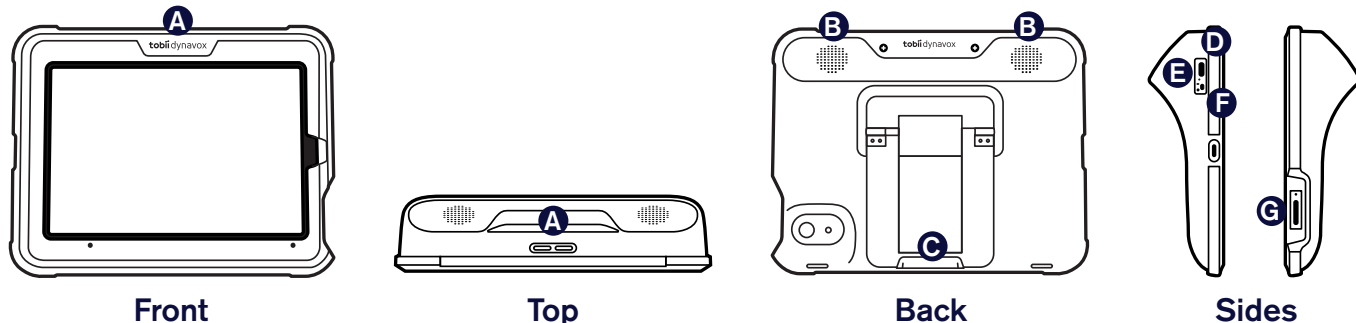


- 1 TD Speech Case Mini
- 2 USB-C to USB-A Cable
- 3 Power Cable

- 4 Power Supply (dual USB)
- 5 Screwdriver
- 6 Shoulder Strap

*If you purchased any accessories, look for the separate installation instructions.*

## Getting to Know Your Device



- A Volume Rocker Switch
- B Speakers
- C Foldable Leg

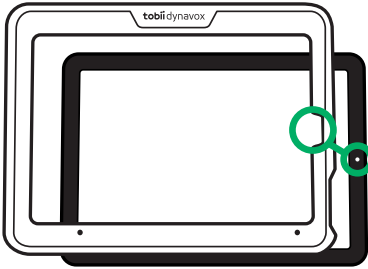
- D Charging Port
- E Charging Indicator Light (Power LED)

- F On/Off Selector
- G iPad Mini Power Button

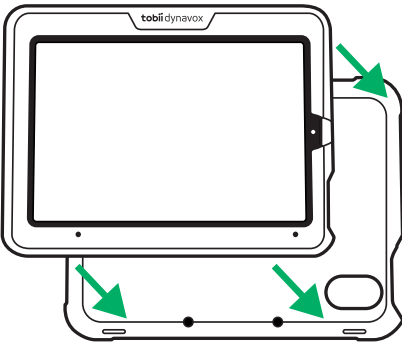
## Step 1: Assembly

❶ Separate the Speech Case Mini front plate and body by pulling the two pieces apart.

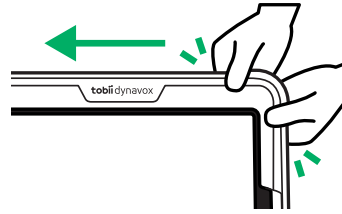
❷ Press the iPad into the front plate, aligning the iPad camera with the cutout in the plate.



❸ Press the iPad/plate assembly into the Speech Case Mini body.

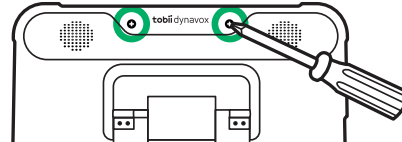


❹ Squeeze around the edges to click it together.

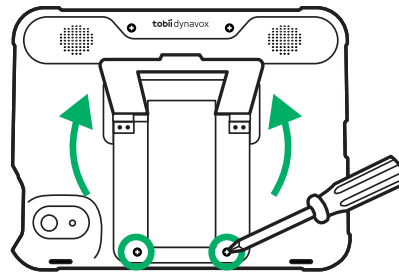


❺ Flip the whole assembly over.

❻ Tighten the top two screws.



❼ Lift up the foldable leg and tighten the two screws at the bottom.



Do not over-tighten the screws

## Step 2: Bluetooth Pairing

❶ Connect the power cable to the Speech Case Mini and then plug into an outlet.

❷ Switch the Speech Case Mini power toggle to the ON position.

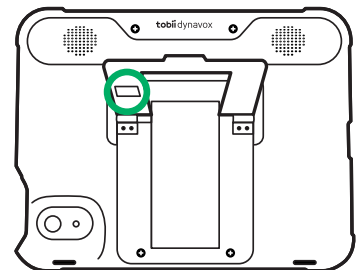
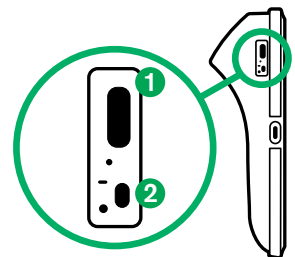
❸ On the iPad, go to **Settings > Bluetooth**.

❹ Make sure that Bluetooth is turned ON.


❺ Select SCmini.



*If using multiple Speech Cases in one room, you can identify each Speech Case by the last five digits of the Bluetooth ID. It will match the unique five-digit serial number located under the foldable leg on the Speech Case.*



## Step 3: Install Communication Apps

Make sure your iPad is connected to the Internet, then open the App Store  and install your AAC apps. Most people only use one AAC app. Users who need symbol support should use TD Snap. Literate users who don't need symbol support may want to download both apps to try and decide which one works best for them.



### TD Snap

Communication app for users who need symbol support. Free to try, full features through in-app purchase.



### TD Talk

Communication app for literate users. Free.

## Step 4: Learn, Practice, and Troubleshoot

Your Speech Case Mini is now ready to use! Feel free to start exploring your device and apps. When you are ready to learn more, check out the TD Snap and TD Talk Training Cards. The training cards teach you how to use the main features of your communication software, grow your AAC communication skills, and troubleshoot issues.



### TD Snap Training Cards

[qrco.de/bbWKbL](https://qrco.de/bbWKbL)



### TD Talk Touch Training Cards

[qrco.de/tdtalktouch](https://qrco.de/tdtalktouch)

## Additional Resources

Scan the QR codes or use the links.



### TD Speech Case Mini User's Manual

[qrco.de/bd5yfd](https://qrco.de/bd5yfd)



### Tobii Dynavox Learning Hub

[learn.tobiidynavox.com](https://learn.tobiidynavox.com)



### TD Speech Case Support Page

[qrco.de/bczj7y](https://qrco.de/bczj7y)



### myTobiiDynavox

[mytobiidynavox.com](https://mytobiidynavox.com)



### TD Facebook Community

[qrco.de/TDFB](https://qrco.de/TDFB)



### North America Technical Support

1-800-344-1778 ext. 1